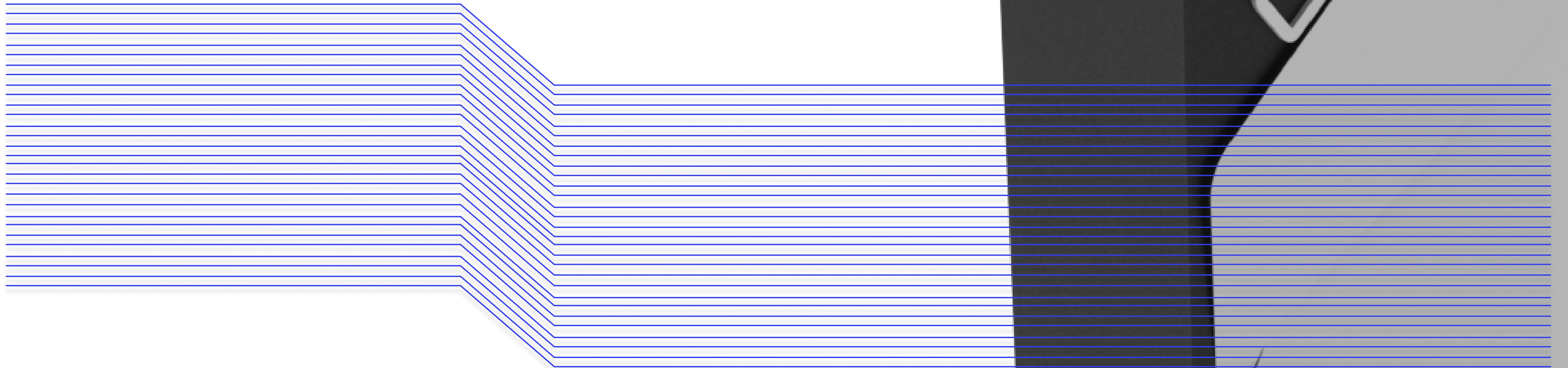




**BATTERY\_2 kWh**

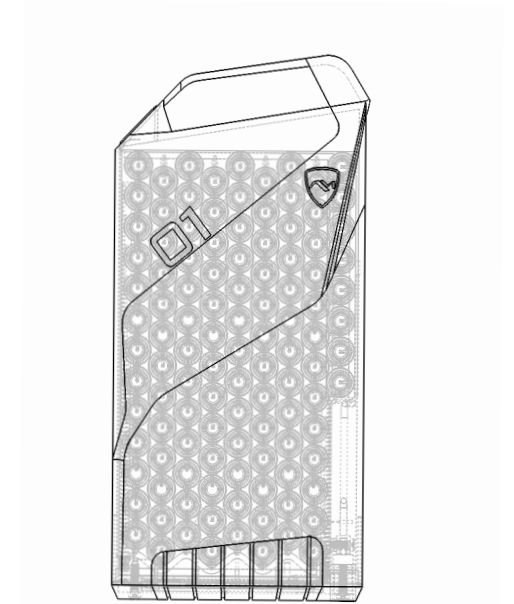
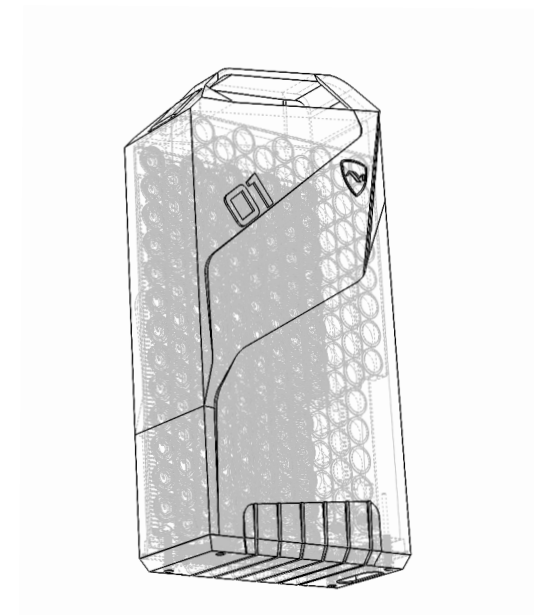
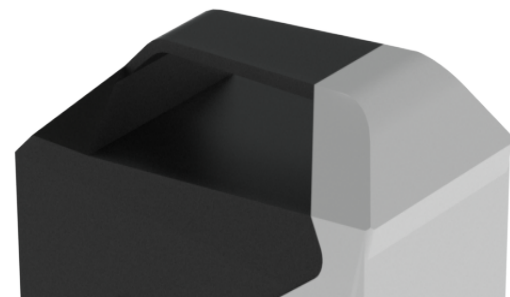
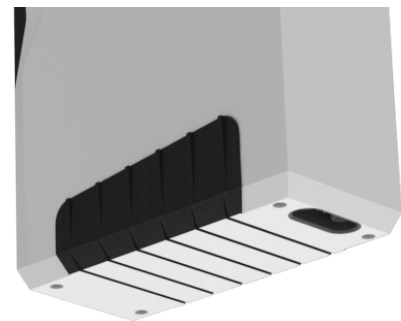
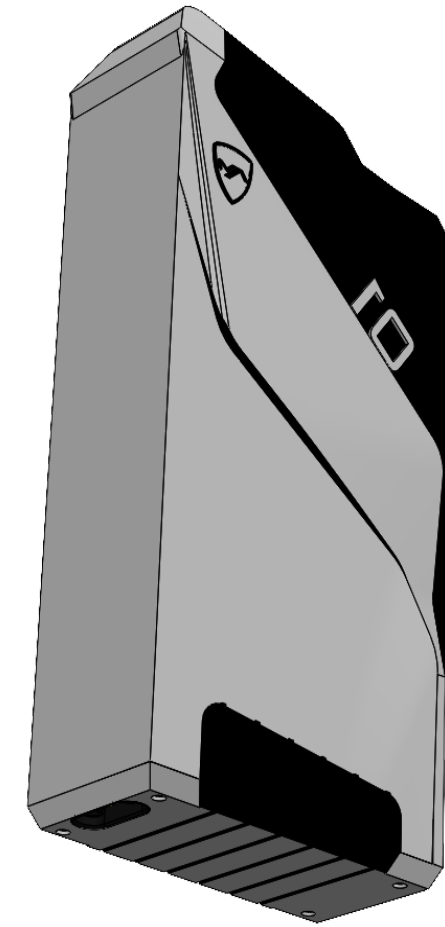


## BATTERY\_4 kWh

# DRIVE INTO THE FUTURE: 2KW BATTERY - LIGHTWEIGHT, PORTABLE, AND SMART, PIONEERING THE EVOLUTION OF ELECTRIC MOBILITY

EXPERIENCE THE EVOLUTION OF ELECTRIC MOBILITY WITH OUR 2KW BATTERY. WEIGHING JUST 9.86 KG, THIS POWERHOUSE DELIVERS A VOLTAGE OF 51.1V, A 2.1 KWH ENERGY CAPACITY, AND A 40AH CAPACITY, ENSURING AN EFFICIENT DRIVING EXPERIENCE IN ANY SETTING. WITH A VERSATILE AT 150A CONNECTOR TYPE, IT SEAMLESSLY INTEGRATES INTO YOUR ELECTRIC LIFESTYLE, OFFERING BOTH PORTABILITY AND SWAPPABILITY.

THE OLED TOUCH DISPLAY AND IOT FEATURES, ACCESSIBLE VIA BLUETOOTH OR NETWORK CONNECTIVITY, PROVIDE INTELLIGENT CONTROL, WHILE APP LOGIN AND DATA SYNC OFFER REAL-TIME INSIGHTS. EMPOWER YOUR DRIVE WITH THE 2KW BATTERY, WHERE LIGHTWEIGHT DESIGN, PORTABILITY, AND SMART TECHNOLOGY CONVERGE FOR THE FUTURE OF ELECTRIC MOBILITY.



## BATTERY\_4 kWh

### DRIVE SMART, DRIVE POWERFUL: INTRODUCING THE 2KW BATTERY FOR ELECTRIC MOBILITY EXCELLENCE

UNLEASH TOMORROW'S DRIVE TODAY - LIGHTWEIGHT, PORTABLE, AND SMART, PIONEERING ELECTRIC MOBILITY INNOVATION!

- POWER OUTPUT: 2KW
- WEIGHT: 9.86 KG
- VOLTAGE: 51.1V
- ENERGY CAPACITY: 2.1 KWH
- CAPACITY: 40AH
- CONNECTOR TYPE: AT 150A
- PORTABILITY: LIGHTWEIGHT AND EASILY SWAPPABLE
- DISPLAY: OLED TOUCH DISPLAY
- IOT FEATURES: BLUETOOTH AND NETWORK CONNECTIVITY
- USER INTERFACE: USER-FRIENDLY CONTROLS FOR MONITORING AND CONTROLLING ENERGY USAGE

POWER

2 KWH

VOLTAGE

51.1V

WEIGHT

9.86 KG

